

Interpreting the PSAT Score Report

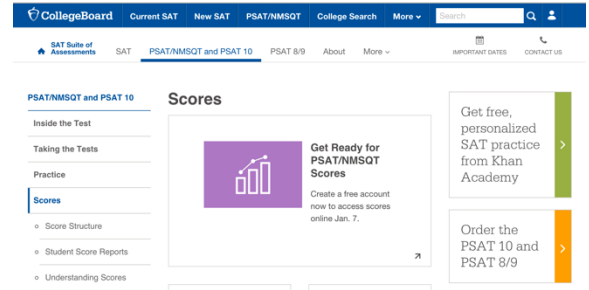
A Reference Sheet for Parents & Students

Along with the many changes to the PSAT exam in October of 2015, the College Board has also revised the student score report and the process for obtaining students' scores. This quick-reference guide is designed to help walk you through the process of obtaining your student's scores and provides a few tips on interpreting those scores.

For a more in-depth consultation, please reach out to one of our Enrollment Directors at 1-87-STUDYPOINT. We are happy to customize a program or discuss our individualized test preparation recommendations with you.

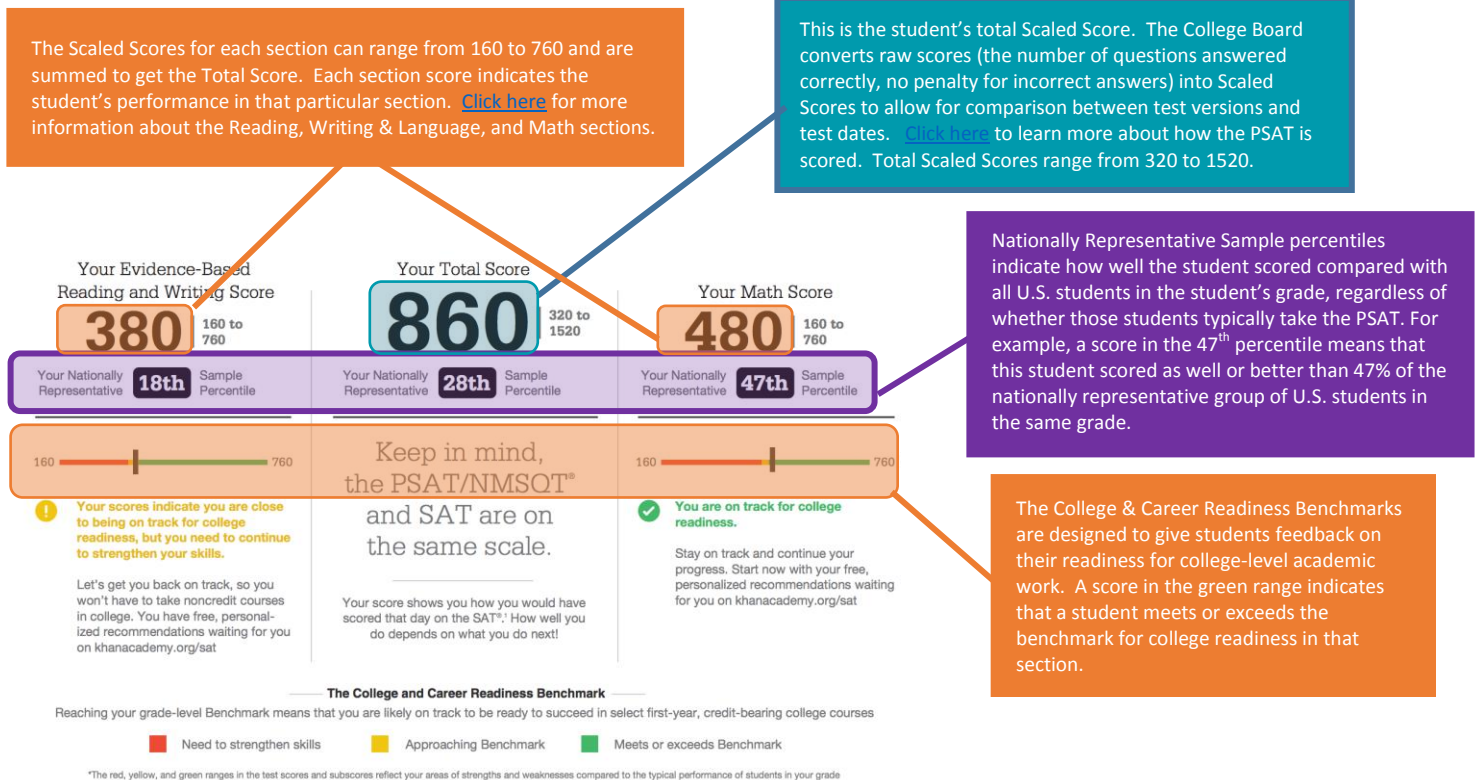
How to View a Student's PSAT Scores Online (AVAILABLE AS OF JANUARY 7th)

1. The student will first need to [create an account](#) on the College Board website, or [log into his/her account](#) if one has already been created.
2. Once logged in, you will see the screen below, which (once scores have been released) will show the student's score report. You may need an online access code which will be emailed to you by the College Board or can be obtained from your guidance counselor.

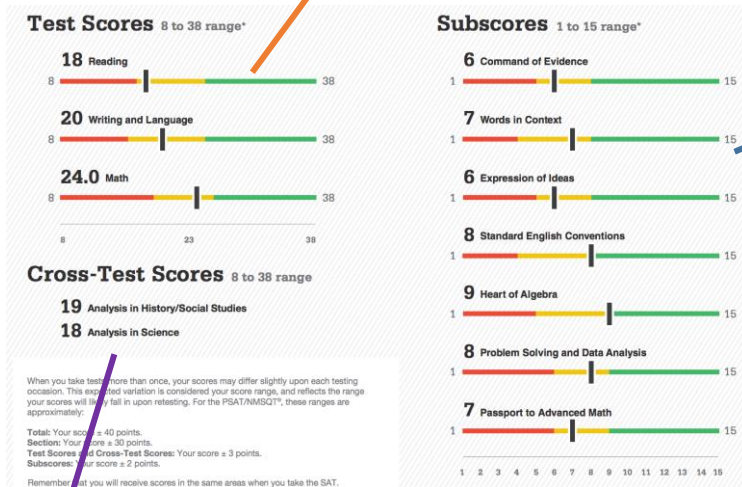


Interpreting the PSAT Score Report

Next, let's walk through a sample score report and give you some advice on how to interpret it.



This section of the score report breaks the student's overall scores into separate test scores for Reading, Writing & Language, and Math. Each of these scores ranges from 8 to 38.



The Subscores give you a more detailed view of the student's performance by breaking down each section into individual sub-scores by skill. These Subscores can range from 1 to 15.

The Cross-Test Scores range from 8 to 38 and group questions across several sections into two larger scores: Analysis in History/Social Studies and Analysis in Science.

National Merit Scholarship Corporation

Your NMSC Selection Index
124

Entry Requirements
(Information you provided on your answer sheet)

High school student:
YES

Year to complete high school and enroll full-time in college:
2018

Years to be spent in grades 9-12:
4

U.S. Citizenship:
NO, but I am a U.S. lawful permanent resident (or have applied for permanent residence, the application for which has not been denied) and I intend to become a U.S. citizen at the earliest opportunity allowed by law.

This section lists the student's National Merit Scholarship Corporation "Selection Index". Only students in their junior year qualify for National Merit Scholarship recognition. [Click here](#) for more information about the National Merit Scholarship Program.

Your Scores: Next Steps

Your score indicates that you are already likely able to:

- Revise text as needed to improve the exactness or content appropriateness of word choices within somewhat challenging texts
- Retain or add information or ideas to a piece of a text to support claims or points in somewhat challenging text
- Revise somewhat challenging text to ensure that information is presented in the most logical order

Reading Test Improve your skills by focusing on:

- Retain or add information or ideas to a piece of text to support claims or points in challenging text
- Use a variety of sentence structures to accomplish a rhetorical purpose such as persuading an audience
- Revise text as needed to improve the exactness or content appropriateness of word choices within challenging texts

18
8 to 38

The "Your Scores: Next Steps" section gives lots of useful information about how to improve the student's scores. The skills listed on the left are those that the student has mastered and those on the right are those that the student's PSAT performance suggests might need improvement.

Reading

Question #	Correct	Your Answer	Difficulty	Subscore	Cross-Test Score
1	A	✓	■ ■ ■		
2	B	✓	■ ■ ■	COE	
3	A	✓	■ ■ ■	WIC	
4	C	✓	■ ■ ■		

- Key:**
- ✓ Correct
 - ∅ Omitted
 - U Unscorable
 - ■ ■ Easy
 - ■ ■ Medium
 - ■ ■ Hard

The final section of the score report lists the student's answers on each individual question. A check mark indicates that the question was answered correctly, a ∅ indicates an omitted question, and a U indicates that the question was unscorable. The blue squares denote whether the College Board classified the question as Easy, Medium, or Hard. This question-level feedback can be very helpful in the process of test preparation as it allows you to customize your student's practice and focus on the areas s/he needs to improve most.

For the month of January, we are offering free 15 min phone consultations to review PSAT scores. To schedule a consultation, call 1-87-STUDYPOINT.

Source: <https://collegereadiness.collegeboard.org/pdf/sample-psat-nmsqt-score-report.pdf>